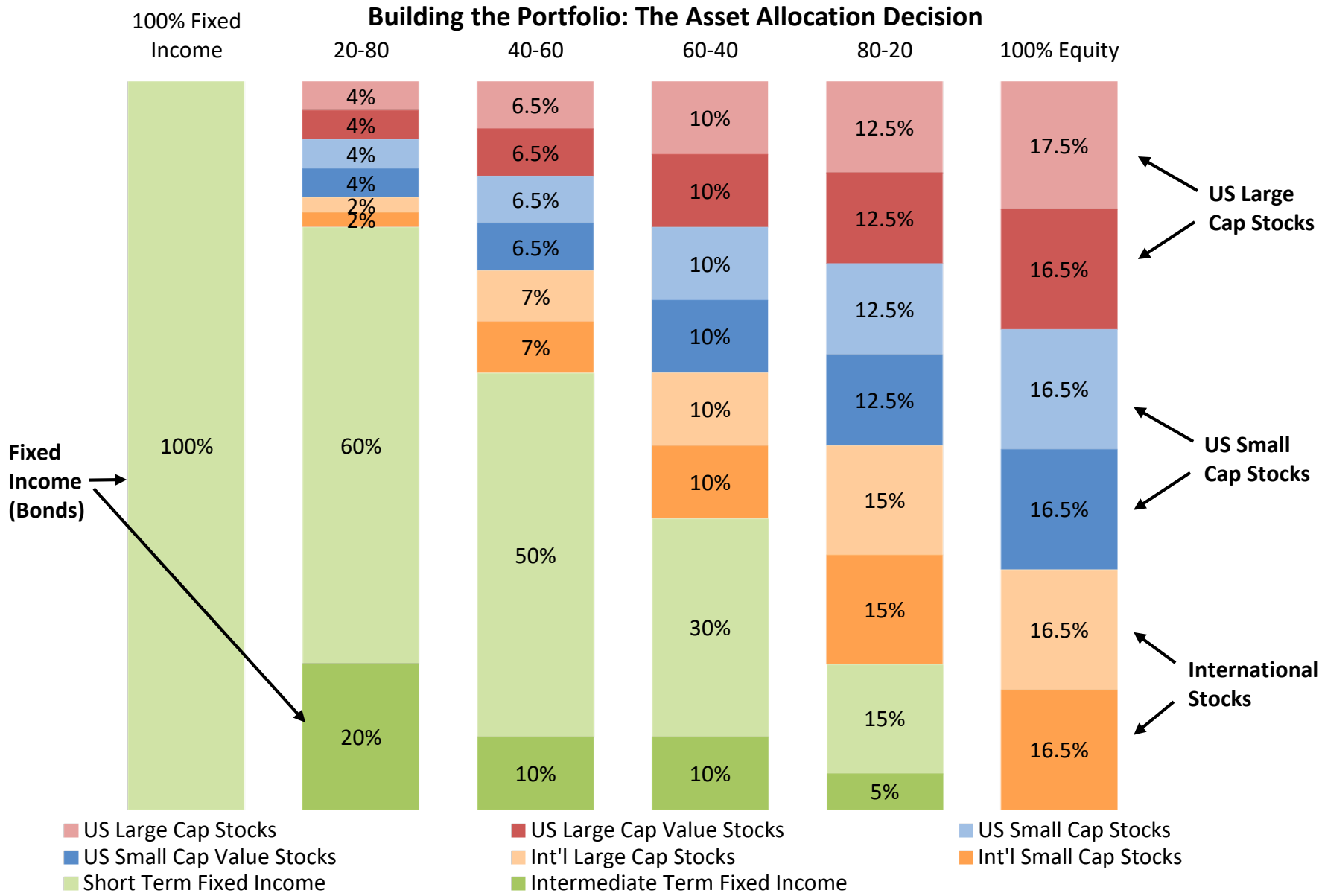


THE RISK/RETURN CONTINUUM

Schultz Collins, Inc.
455 Market Street, Suite 1250
San Francisco, CA 94105

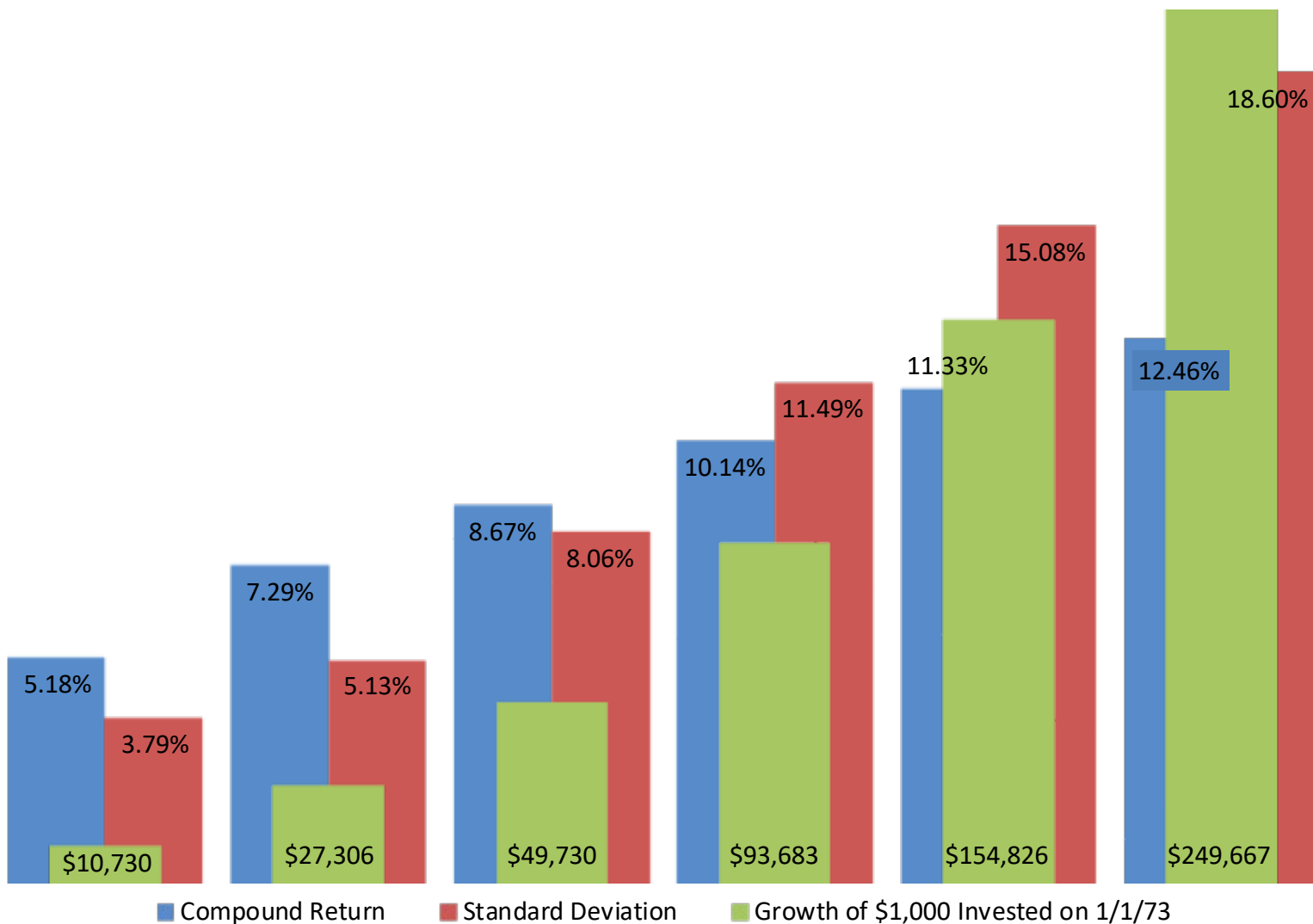
phone: 415.291.3000
877.291.2205

THE RISK/RETURN CONTINUUM



The Risk/Return Tradeoff: Historical Performance of Sample Portfolios: (1973 - 2019)

100% Fixed Income 20-80 40-60 60-40 80-20 100% Equity



**Adjusting for Interest Rates and Expenses:
An Illustration of Expected Returns¹**

The Sample Portfolio Returns listed on the previous page were earned over a period during which the risk-free 30 Day US Treasury Bill generated an annualized return of 4.68%. Given that the annual return from 30 Day T-Bills was 2.14% in 2019, expected portfolio returns may be adjusted as follows:

	100% Fixed Income	20-80	40-60	60-40	80-20	100% Equity
Arithmetic Average Return	5.24%	7.41%	8.97%	10.76%	12.41%	14.13%
Compound Return	5.18%	7.29%	8.67%	10.14%	11.33%	12.46%
Average Premium ² over 30 Day T-Bill	0.56%	2.73%	4.29%	6.08%	7.73%	9.45%
Mean Expected Return (Premium plus Current T-Bill Return)	2.70%	4.87%	6.43%	8.22%	9.86%	11.59%
Expense-Adjusted Mean Expected Return ³	2.40%	4.47%	5.93%	7.62%	9.16%	10.79%

¹ Returns should not be construed as a track record of any actual portfolio. Indexed mutual fund investments designed to replicate asset class performance were not available to investors throughout the entire period illustrated. "Expected return" is the statistical mean return and is not to be construed as a projection of actual market returns over any given time period.

² Premium = Portfolio Return – Risk Free Rate, defined as the historical rate of return for the 30 Day T-Bill.

³ Expense Adjustment is illustrative only and is not meant to project actual future expenses. Expense Adjustments assume a 30 basis point adjustment for the 100% Fixed Income portfolio, with an incremental 10 basis point adjustment for each 20% increase in equity weighting.

THE RISK/RETURN CONTINUUM

Matrix of Quarterly Portfolio Returns (188 Calendar Quarters Between 1/1/73 and 12/31/19)

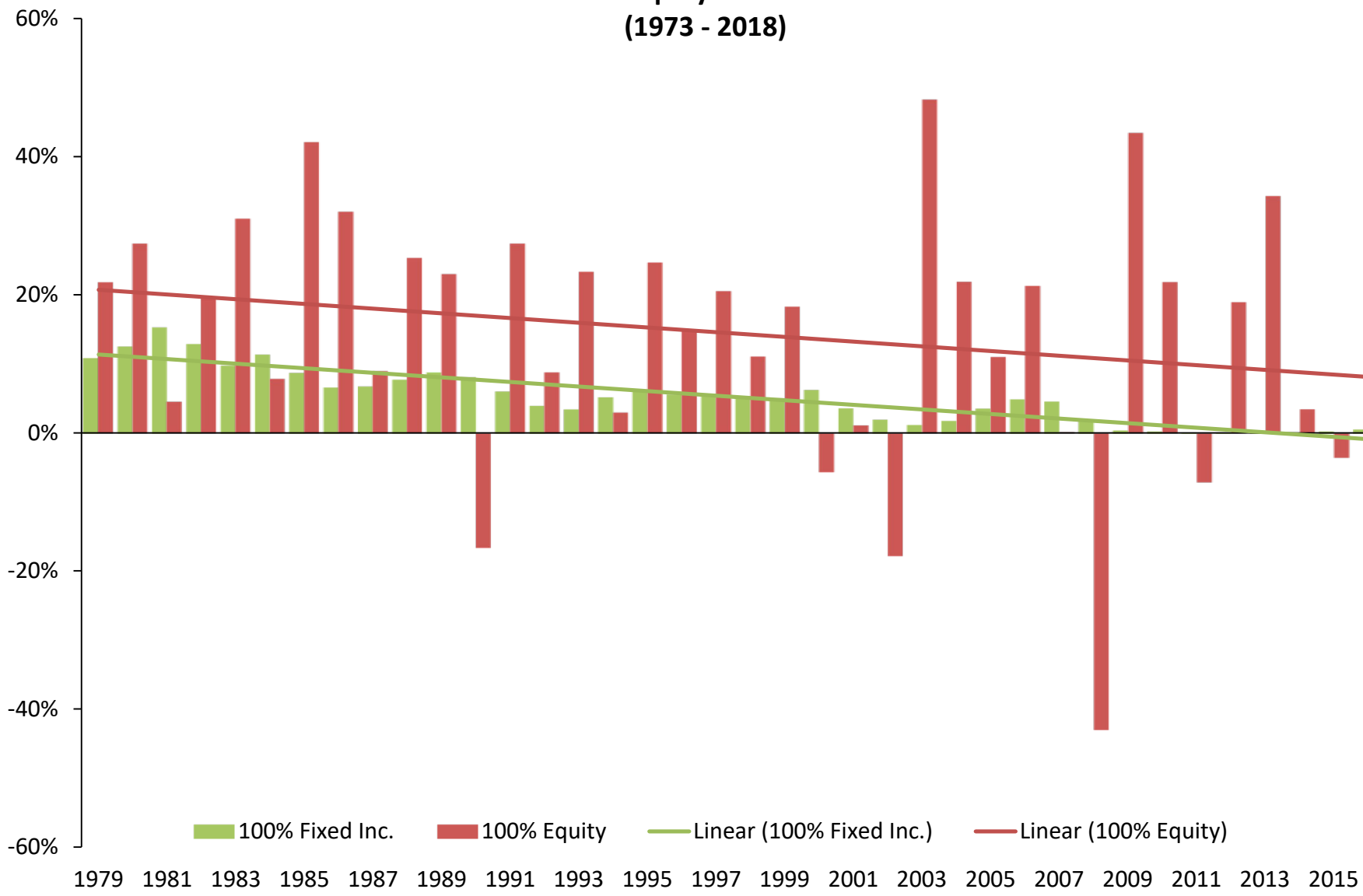
	100% Fixed Income	20-80	40-60	60-40	80-20	100% Equity
Below -26%						1
-26% to -24%						
-24% to -22%						
-22% to -20%						
-20% to -18%					1	5
-18% to -16%						2
-16% to -14%					5	2
-14% to -12%				1	3	2
-12% to -10%				5	2	2
-10% to -8%			1	4	3	3
-8% to -6%			6	4	4	6
-6% to -4%			7	4	8	7
-4% to -2%		7	5	12	6	7
-2% to 0%		23	20	19	20	16
Total Negative Quarters	0	30	39	49	52	53
0% to 2%	152	75	47	31	21	17
2% to 4%	36	60	51	37	29	25
4% to 6%		19	29	30	31	22
6% to 8%		3	12	18	19	21
8% to 10%		1	9	11	14	17
10% to 12%				3	8	9
12% to 14%				6	5	8
14% to 16%			1	2	1	5
16% to 18%					5	2
18% to 20%					2	4
20% to 22%						1
22% to 24%				1		2
24% to 26%						1
26% to 28%						
28% to 30%					1	
Above 30%						1

THE RISK/RETURN CONTINUUM

Annual Portfolio Performance (1980 to 2019)

Portfolio Performance							Inflation Adjusted Portfolio Performance						
Year	100% Fixed Inc.	20-80	40-60	60-40	80-20	100% Equity	Year	100% Fixed Inc. Inf Adj	20-80 Inf Adj	40-60 Inf Adj	60-40 Inf Adj	80-20 Inf Adj	100% Equity Inf Adj
1980	12.48%	14.12%	17.82%	20.76%	24.16%	27.34%	1980	0.07%	1.54%	4.83%	7.44%	10.46%	13.30%
1981	15.22%	12.40%	10.52%	8.49%	6.38%	4.70%	1981	5.76%	3.18%	1.46%	-0.41%	-2.35%	-3.89%
1982	12.82%	17.66%	16.70%	18.28%	17.99%	19.73%	1982	8.61%	13.27%	12.35%	13.88%	13.59%	15.27%
1983	9.71%	13.85%	18.24%	22.57%	26.90%	31.24%	1983	5.69%	9.69%	13.91%	18.09%	22.26%	26.44%
1984	11.31%	11.19%	10.32%	9.64%	8.92%	8.01%	1984	7.07%	6.96%	6.12%	5.47%	4.78%	3.90%
1985	8.67%	16.48%	23.25%	29.78%	37.02%	42.18%	1985	4.72%	12.24%	18.77%	25.06%	32.05%	37.02%
1986	6.61%	11.73%	17.82%	22.61%	29.03%	32.06%	1986	5.42%	10.48%	16.51%	21.24%	27.59%	30.58%
1987	6.76%	5.68%	7.66%	7.90%	9.72%	9.14%	1987	2.25%	1.22%	3.11%	3.35%	5.09%	4.53%
1988	7.69%	10.97%	14.71%	18.25%	21.94%	25.37%	1988	3.13%	6.27%	9.86%	13.24%	16.78%	20.06%
1989	8.76%	12.54%	14.91%	17.81%	20.38%	23.27%	1989	3.93%	7.55%	9.80%	12.58%	15.03%	17.79%
1990	8.05%	3.51%	-1.74%	-6.62%	-11.82%	-16.46%	1990	1.83%	-2.44%	-7.39%	-12.00%	-16.89%	-21.26%
1991	6.05%	12.78%	15.24%	19.70%	22.59%	27.39%	1991	2.90%	9.43%	11.82%	16.14%	18.94%	23.61%
1992	3.99%	6.59%	6.06%	7.30%	6.92%	8.96%	1992	1.06%	3.59%	3.07%	4.27%	3.91%	5.89%
1993	3.49%	8.23%	12.13%	16.06%	20.22%	23.41%	1993	0.73%	5.34%	9.13%	12.95%	17.00%	20.11%
1994	5.23%	2.92%	3.47%	2.83%	3.03%	2.42%	1994	2.49%	0.24%	0.78%	0.16%	0.34%	-0.25%
1995	6.13%	12.80%	15.00%	19.26%	21.93%	26.60%	1995	3.50%	10.00%	12.15%	16.31%	18.91%	23.46%
1996	5.61%	7.88%	9.74%	12.03%	13.80%	16.63%	1996	2.21%	4.42%	6.21%	8.42%	10.14%	12.88%
1997	5.70%	10.31%	11.96%	15.37%	17.13%	21.57%	1997	3.93%	8.46%	10.09%	13.44%	15.17%	19.54%
1998	5.17%	7.30%	8.60%	10.13%	11.59%	13.05%	1998	3.50%	5.60%	6.88%	8.38%	9.82%	11.25%
1999	5.07%	6.71%	10.30%	13.06%	16.41%	19.18%	1999	2.33%	3.92%	7.42%	10.10%	13.37%	16.07%
2000	6.27%	6.26%	4.22%	3.14%	1.29%	0.32%	2000	2.79%	2.78%	0.80%	-0.24%	-2.02%	-2.97%
2001	3.63%	4.38%	2.15%	1.37%	-0.59%	-1.14%	2001	2.05%	2.78%	0.59%	-0.18%	-2.11%	-2.65%
2002	2.02%	-0.53%	-4.70%	-8.57%	-12.35%	-16.99%	2002	-0.35%	-2.84%	-6.91%	-10.70%	-14.39%	-18.92%
2003	1.25%	10.51%	19.29%	28.09%	37.02%	45.30%	2003	-0.62%	8.47%	17.09%	25.72%	34.49%	42.62%
2004	1.82%	5.67%	9.71%	13.49%	17.59%	20.96%	2004	-1.39%	2.34%	6.25%	9.91%	13.88%	17.15%
2005	3.59%	4.56%	6.82%	8.43%	10.59%	11.92%	2005	0.17%	1.11%	3.30%	4.85%	6.94%	8.22%
2006	4.94%	8.02%	11.71%	15.08%	18.73%	21.93%	2006	2.34%	5.34%	8.94%	12.23%	15.79%	18.91%
2007	4.61%	4.36%	3.87%	3.26%	2.90%	1.92%	2007	0.51%	0.27%	-0.21%	-0.79%	-1.13%	-2.07%
2008	2.01%	-5.46%	-14.35%	-22.60%	-31.33%	-39.49%	2008	1.91%	-5.55%	-14.43%	-22.67%	-31.39%	-39.54%
2009	0.47%	7.78%	14.30%	20.87%	27.64%	33.60%	2009	-2.19%	4.92%	11.28%	17.67%	24.26%	30.07%
2010	0.31%	5.18%	8.11%	11.78%	14.99%	18.46%	2010	-1.17%	3.63%	6.52%	10.13%	13.30%	16.72%
2011	0.18%	-0.05%	-2.43%	-3.94%	-6.04%	-7.53%	2011	-2.70%	-2.93%	-5.24%	-6.71%	-8.74%	-10.19%
2012	0.17%	4.96%	8.47%	12.46%	16.16%	19.99%	2012	-1.54%	3.16%	6.61%	10.54%	14.17%	17.94%
2013	0.12%	7.22%	13.77%	20.79%	27.29%	34.71%	2013	-1.37%	5.63%	12.08%	19.00%	25.40%	32.71%
2014	0.12%	1.84%	1.85%	2.69%	2.85%	4.01%	2014	-0.63%	1.08%	1.08%	1.92%	2.08%	3.22%
2015	0.30%	-0.43%	-0.90%	-1.61%	-2.04%	-2.97%	2015	-0.43%	-1.15%	-1.61%	-2.33%	-2.75%	-3.68%
2016	0.60%	4.75%	7.23%	10.68%	13.23%	17.09%	2016	-1.44%	2.62%	5.05%	8.43%	10.93%	14.71%
2017	1.16%	4.94%	9.15%	12.98%	17.24%	20.70%	2017	-0.93%	2.77%	6.90%	10.64%	14.82%	18.21%
2018	2.31%	-0.77%	-3.75%	-6.64%	-9.69%	-12.29%	2018	0.39%	-2.63%	-5.55%	-8.39%	-11.39%	-13.94%
2019	2.11%	6.98%	9.67%	13.35%	16.27%	20.17%	2019	-0.17%	4.59%	7.22%	10.82%	13.67%	17.49%

Annual Return Trend for 100% Equity and 100% Fixed Income Allocations:
(1973 - 2018)



THE RISK/RETURN CONTINUUM

Overlapping Three-Year Period Portfolio Performance (1980 to 2019)

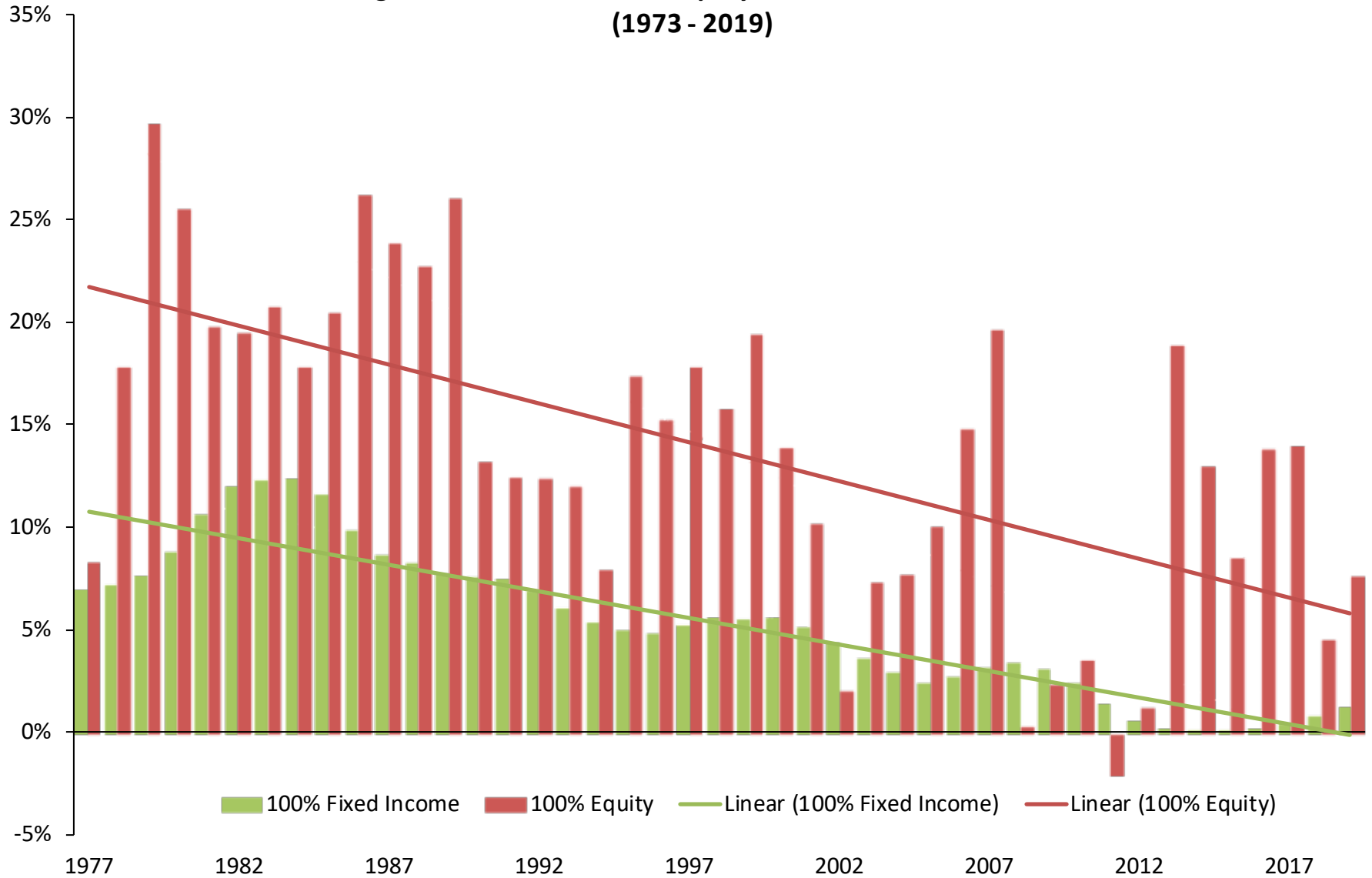
Portfolio Performance							Inflation Adjusted Portfolio Performance						
3-Year	100% Fixed						3-Year	100% Fixed	20-80	40-60	60-40	80-20	100% Equity
Ending	Inc.	20-80	40-60	60-40	80-20	100% Equity	Ending	Inf Adj	Inf Adj	Inf Adj	Inf Adj	Inf Adj	Inf Adj
1980	10.55%	12.13%	15.69%	18.50%	21.76%	24.69%	1980	-0.91%	0.51%	3.70%	6.22%	9.14%	11.77%
1981	12.82%	13.14%	14.31%	15.36%	16.18%	17.66%	1981	1.16%	1.44%	2.49%	3.43%	4.17%	5.50%
1982	13.50%	14.71%	14.97%	15.72%	15.94%	16.87%	1982	4.75%	5.87%	6.12%	6.81%	7.01%	7.87%
1983	12.56%	14.62%	15.11%	16.30%	16.79%	18.05%	1983	6.68%	8.63%	9.10%	10.23%	10.69%	11.89%
1984	11.27%	14.20%	15.03%	16.71%	17.71%	19.28%	1984	7.12%	9.94%	10.74%	12.35%	13.32%	14.83%
1985	9.89%	13.82%	17.15%	20.37%	23.72%	26.32%	1985	5.82%	9.61%	12.81%	15.92%	19.15%	21.64%
1986	8.84%	13.11%	17.01%	20.39%	24.41%	26.58%	1986	5.73%	9.87%	13.66%	16.94%	20.86%	22.96%
1987	7.34%	11.21%	16.06%	19.75%	24.72%	27.02%	1987	4.12%	7.87%	12.58%	16.15%	20.98%	23.21%
1988	7.02%	9.43%	13.32%	16.09%	19.96%	21.80%	1988	3.59%	5.92%	9.69%	12.37%	16.12%	17.90%
1989	7.73%	9.69%	12.37%	14.55%	17.22%	19.04%	1989	3.10%	4.97%	7.54%	9.63%	12.18%	13.92%
1990	8.17%	8.94%	9.01%	9.16%	8.98%	8.89%	1990	2.96%	3.69%	3.76%	3.91%	3.74%	3.65%
1991	7.62%	9.53%	9.17%	9.61%	9.18%	9.47%	1991	2.89%	4.71%	4.37%	4.79%	4.38%	4.66%
1992	6.02%	7.56%	6.30%	6.24%	4.95%	5.06%	1992	1.93%	3.41%	2.20%	2.14%	0.90%	1.01%
1993	4.51%	9.17%	11.08%	14.23%	16.37%	19.65%	1993	1.56%	6.09%	7.94%	11.01%	13.08%	16.28%
1994	4.24%	5.89%	7.16%	8.59%	9.81%	11.26%	1994	1.42%	3.03%	4.27%	5.66%	6.85%	8.25%
1995	4.94%	7.91%	10.09%	12.49%	14.73%	16.96%	1995	2.23%	5.12%	7.24%	9.58%	11.76%	13.94%
1996	5.65%	7.79%	9.30%	11.17%	12.65%	14.78%	1996	2.73%	4.81%	6.28%	8.10%	9.53%	11.61%
1997	5.81%	10.31%	12.21%	15.52%	17.57%	21.53%	1997	3.21%	7.60%	9.46%	12.68%	14.68%	18.55%
1998	5.49%	8.49%	10.09%	12.49%	14.15%	17.03%	1998	3.21%	6.15%	7.71%	10.06%	11.68%	14.50%
1999	5.32%	8.10%	10.28%	12.83%	15.02%	17.88%	1999	3.25%	5.98%	8.12%	10.62%	12.76%	15.57%
2000	5.50%	6.76%	7.68%	8.70%	9.58%	10.56%	2000	2.87%	4.09%	4.99%	5.98%	6.85%	7.81%
2001	4.99%	5.78%	5.50%	5.73%	5.44%	5.73%	2001	2.39%	3.16%	2.89%	3.12%	2.83%	3.12%
2002	3.96%	3.33%	0.48%	-1.49%	-4.08%	-6.28%	2002	1.49%	0.87%	-1.91%	-3.84%	-6.36%	-8.51%
2003	2.29%	4.69%	5.11%	5.88%	6.08%	6.04%	2003	0.35%	2.70%	3.11%	3.87%	4.07%	4.03%
2004	1.70%	5.12%	7.64%	9.95%	12.19%	13.42%	2004	-0.79%	2.55%	5.01%	7.26%	9.45%	10.65%
2005	2.22%	6.88%	11.82%	16.38%	21.23%	25.30%	2005	-0.62%	3.92%	8.72%	13.15%	17.88%	21.83%
2006	3.44%	6.07%	9.39%	12.30%	15.58%	18.18%	2006	0.36%	2.91%	6.14%	8.95%	12.14%	14.66%
2007	4.38%	5.63%	7.42%	8.81%	10.55%	11.62%	2007	1.00%	2.22%	3.94%	5.29%	6.97%	8.01%
2008	3.85%	2.14%	-0.21%	-2.75%	-5.68%	-9.06%	2008	1.59%	-0.08%	-2.38%	-4.87%	-7.74%	-11.04%
2009	2.35%	2.07%	0.56%	-1.14%	-3.38%	-6.25%	2009	0.06%	-0.21%	-1.69%	-3.35%	-5.54%	-8.34%
2010	0.93%	2.33%	1.91%	1.50%	0.26%	-1.43%	2010	-0.50%	0.89%	0.47%	0.07%	-1.15%	-2.82%
2011	0.32%	4.25%	6.43%	9.08%	11.31%	13.54%	2011	-2.02%	1.82%	3.95%	6.53%	8.71%	10.89%
2012	0.22%	3.33%	4.59%	6.49%	7.87%	9.54%	2012	-1.81%	1.24%	2.48%	4.33%	5.69%	7.33%
2013	0.16%	4.00%	6.39%	9.28%	11.58%	14.34%	2013	-1.87%	1.89%	4.23%	7.06%	9.32%	12.02%
2014	0.14%	4.65%	7.92%	11.74%	14.99%	18.91%	2014	-1.18%	3.27%	6.50%	10.26%	13.48%	17.34%
2015	0.18%	2.83%	4.72%	6.87%	8.65%	10.78%	2015	-0.81%	1.81%	3.69%	5.81%	7.57%	9.68%
2016	0.34%	2.03%	2.67%	3.80%	4.49%	5.72%	2016	-0.83%	0.84%	1.47%	2.58%	3.26%	4.48%
2017	0.69%	3.06%	5.07%	7.15%	9.15%	11.10%	2017	-0.93%	1.40%	3.38%	5.43%	7.39%	9.31%
2018	1.35%	2.94%	4.05%	5.29%	6.23%	7.42%	2018	-0.66%	0.89%	1.98%	3.20%	4.12%	5.28%
2019	1.86%	3.67%	4.84%	6.13%	7.17%	8.35%	2019	-0.24%	1.53%	2.68%	3.95%	4.97%	6.12%

THE RISK/RETURN CONTINUUM

Overlapping Five-Year Period Portfolio Performance (1980 to 2019)

Portfolio Performance							Inflation Adjusted Portfolio Performance						
5-Year Ending	100% Fixed Inc.	20-80	40-60	60-40	80-20	100% Equity	5-Year Ending	100% Fixed Inc. Inf Adj	20-80 Inf Adj	40-60 Inf Adj	60-40 Inf Adj	80-20 Inf Adj	100% Equity Inf Adj
1980	8.74%	11.49%	15.23%	18.57%	22.16%	25.44%	1980	-0.43%	2.08%	5.51%	8.57%	11.85%	14.86%
1981	10.55%	11.26%	13.93%	15.73%	18.06%	19.70%	1981	0.45%	1.09%	3.52%	5.15%	7.26%	8.76%
1982	11.92%	13.27%	14.84%	16.39%	17.77%	19.44%	1982	2.25%	3.48%	4.92%	6.33%	7.59%	9.12%
1983	12.19%	14.17%	15.56%	17.35%	18.61%	20.68%	1983	3.51%	5.34%	6.62%	8.27%	9.44%	11.34%
1984	12.29%	13.82%	14.67%	15.80%	16.59%	17.74%	1984	5.40%	6.84%	7.63%	8.70%	9.44%	10.52%
1985	11.52%	14.29%	15.70%	17.48%	18.91%	20.37%	1985	6.36%	9.01%	10.35%	12.05%	13.41%	14.80%
1986	9.80%	14.15%	17.19%	20.39%	23.59%	26.09%	1986	6.29%	10.51%	13.45%	16.55%	19.64%	22.06%
1987	8.60%	11.73%	15.32%	18.20%	21.81%	23.77%	1987	5.02%	8.05%	11.52%	14.31%	17.80%	19.70%
1988	8.19%	11.16%	14.62%	17.36%	20.84%	22.65%	1988	4.50%	7.37%	10.71%	13.36%	16.72%	18.46%
1989	7.69%	11.43%	15.56%	19.06%	23.28%	25.93%	1989	3.88%	7.48%	11.47%	14.85%	18.92%	21.48%
1990	7.57%	8.83%	10.44%	11.47%	12.88%	13.23%	1990	3.31%	4.51%	6.06%	7.05%	8.40%	8.73%
1991	7.46%	9.03%	9.95%	10.94%	11.73%	12.41%	1991	2.81%	4.31%	5.19%	6.13%	6.89%	7.55%
1992	6.90%	9.22%	9.62%	10.81%	11.15%	12.38%	1992	2.57%	4.80%	5.18%	6.32%	6.65%	7.82%
1993	6.05%	8.67%	9.13%	10.40%	10.84%	12.02%	1993	2.08%	4.61%	5.04%	6.27%	6.69%	7.83%
1994	5.35%	6.75%	6.86%	7.43%	7.44%	7.95%	1994	1.80%	3.15%	3.26%	3.81%	3.82%	4.31%
1995	4.97%	8.60%	10.28%	12.82%	14.63%	17.30%	1995	2.13%	5.66%	7.29%	9.77%	11.53%	14.13%
1996	4.89%	7.64%	9.20%	11.34%	12.94%	15.25%	1996	1.99%	4.67%	6.19%	8.27%	9.82%	12.07%
1997	5.23%	8.38%	10.39%	12.97%	15.02%	17.80%	1997	2.57%	5.64%	7.60%	10.11%	12.11%	14.82%
1998	5.57%	8.19%	9.69%	11.79%	13.32%	15.76%	1998	3.12%	5.69%	7.15%	9.20%	10.70%	13.08%
1999	5.54%	8.98%	11.10%	13.93%	16.12%	19.32%	1999	3.09%	6.46%	8.53%	11.29%	13.43%	16.56%
2000	5.56%	7.68%	8.93%	10.67%	11.89%	13.89%	2000	2.95%	5.02%	6.24%	7.93%	9.12%	11.07%
2001	5.17%	6.97%	7.38%	8.47%	8.91%	10.19%	2001	2.92%	4.69%	5.09%	6.16%	6.58%	7.83%
2002	4.42%	4.78%	3.98%	3.54%	2.77%	2.09%	2002	2.05%	2.41%	1.62%	1.20%	0.44%	-0.22%
2003	3.63%	5.40%	5.95%	6.72%	7.08%	7.35%	2003	1.23%	2.96%	3.49%	4.24%	4.60%	4.86%
2004	2.98%	5.19%	5.83%	6.80%	7.29%	7.67%	2004	0.48%	2.64%	3.26%	4.21%	4.69%	5.06%
2005	2.46%	4.86%	6.36%	7.87%	9.20%	10.05%	2005	-0.04%	2.31%	3.77%	5.25%	6.54%	7.37%
2006	2.71%	5.58%	8.28%	10.65%	13.14%	14.77%	2006	0.02%	2.81%	5.44%	7.75%	10.18%	11.76%
2007	3.23%	6.60%	10.16%	13.37%	16.83%	19.57%	2007	0.19%	3.46%	6.92%	10.04%	13.40%	16.06%
2008	3.39%	3.32%	3.10%	2.51%	1.76%	0.36%	2008	0.70%	0.64%	0.42%	-0.16%	-0.89%	-2.25%
2009	3.11%	3.73%	3.95%	3.81%	3.44%	2.37%	2009	0.54%	1.14%	1.35%	1.22%	0.86%	-0.18%
2010	2.45%	3.85%	4.20%	4.44%	4.25%	3.54%	2010	0.27%	1.64%	1.98%	2.22%	2.03%	1.34%
2011	1.50%	2.25%	1.41%	0.73%	-0.51%	-2.03%	2011	-0.74%	-0.01%	-0.83%	-1.49%	-2.71%	-4.19%
2012	0.63%	2.37%	2.30%	2.47%	1.93%	1.22%	2012	-1.15%	0.56%	0.49%	0.66%	0.13%	-0.56%
2013	0.25%	4.98%	8.27%	12.01%	15.32%	18.79%	2013	-1.80%	2.84%	6.06%	9.72%	12.96%	16.37%
2014	0.18%	3.80%	5.80%	8.42%	10.44%	12.99%	2014	-1.48%	2.07%	4.04%	6.61%	8.61%	11.11%
2015	0.18%	2.67%	3.98%	5.68%	6.96%	8.57%	2015	-1.34%	1.11%	2.40%	4.09%	5.34%	6.93%
2016	0.26%	3.63%	5.96%	8.72%	11.02%	13.82%	2016	-1.08%	2.24%	4.54%	7.26%	9.53%	12.29%
2017	0.46%	3.63%	6.09%	8.82%	11.23%	13.95%	2017	-0.96%	2.17%	4.59%	7.28%	9.66%	12.34%
2018	0.90%	2.04%	2.60%	3.35%	3.85%	4.58%	2018	-0.61%	0.52%	1.07%	1.81%	2.30%	3.02%
2019	1.29%	3.05%	4.13%	5.42%	6.43%	7.64%	2019	-0.52%	1.21%	2.27%	3.53%	4.53%	5.72%

Five-Year Rolling Return Trend for 100% Equity and 100% Fixed Income Allocations:
(1973 - 2019)



THE RISK/RETURN CONTINUUM

Data Sources

Asset Class	Data Source
S&P 500 Index	S&P 500 Index total return index
US Large Cap Value Stocks	Fama-French US Large Value Index
US Small Cap Stocks	Center for Research in Security Prices (CRSP) 6-8 Index
US Small Cap Value Stocks	Fama-French US Small Cap Value Index
International Large Cap Stocks	MSCI EAFE (Europe, Australasia & Far East) Index
International Small Cap Stocks	DFA (Dimensional Fund Advisors) International Small Company Index
BarCap Gov't/Corp Bond Index	Bloomberg Barclays Government/Corporate Bond Index. Barclays Capital Indices were formerly Lehman Brothers Indices.
One Year Fixed Income	One Year Constant Maturity US T-Bills
Intermediate Term Fixed Income	Bloomberg Barclays Intermediate Term Government/Corporate Bond Index

DISCLAIMER

The investment professionals of Schultz Collins are registered with Hightower Advisors, LLC, an investment advisor registered with the SEC. Their advisory services are offered through Hightower Advisors, LLC. This is not an offer to buy or sell securities. No investment process is free of risk, and there is no guarantee that the information presented herein will be profitable. Investors may lose the entire value of their investments. Past performance is not indicative of current or future performance, and is not a guarantee. In preparing these materials, we have relied upon and assumed without independent verification the accuracy and completeness of information available from public and internal sources. Hightower shall not in any way be liable for claims arising from, and makes no expressed or implied representations or warranties as to the accuracy or completeness of, the information provided herein, and shall not be liable in any way for statements, omissions or errors herein. This document was created for informational purposes only; the opinions expressed herein are solely those of the author, and do not represent those of Hightower Advisors, LLC, or any of its affiliates.

Schultz Collins does not provide tax advice. All client assets are held at independent custodians. Please contact us should you discover discrepancies with their statements.